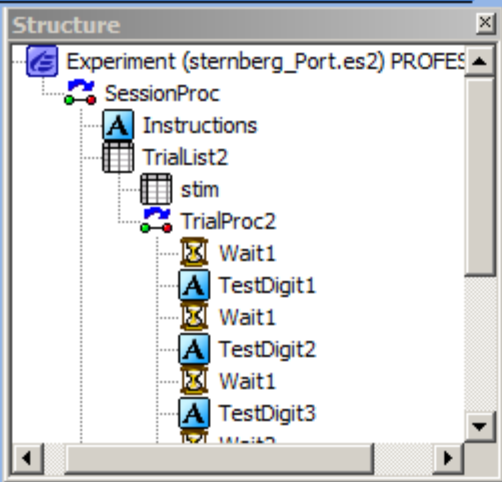




Toolbox

E-Objects

- List
- Slide
- FeedbackDisplay
- InLine
- TextDisplay
- ImageDisplay



Properties

(no description available)

Script

```

837     If c.AttribExists(Mouse.Name & ebDot & ebUCCase_C & ebLCase_o & ebLCase_n & ebLCase
838     If c.AttribExists(Mouse.Name & ebDot & ebUCCase_U & ebLCase_s & ebLCase_e & ebLCase
839     #If RUNTIME_VERSION_PERSIST >= 201 Then
840     Mouse.RTAdjustment = 0
841     If c.AttribExists(Mouse.Name & ebDot & ebUCCase_R & ebUCCase_T & ebUCCase_A & ebLCase

```

Runtime Error!

The following runtime error occurred:

An error occurred while attempting to open the device

Device Name: ParallelPort
 Error: 0x00002747
 Message: 'Unable to communicate with the Port I/O device driver'

Error:0x00000000

Please ensure the Port I/O device driver is installed'

Line: 869
 Error Number: 10051

OK

```

ParallelPortDevice
ort"
viceInfo As ParallelPortDeviceInfo
Info.CollectionMode = ebPressesAndReleases
Info.LPT = 3
Info.Invert = CLogical("No")
Info.Mask = -1
Info.DataPort = 0
Info.Debounce = 0
hey exist
.Name & ".CollectionMode") Then ParallelPortParallelPort
.Name & ".LPT") Then ParallelPortParallelPortDeviceInfo.
Name & ".Invert") Then ParallelPortParallelPortDeviceIn

```

Output

```

Device Name: ParallelPort
Error: 0x00002747
Message: 'Unable to communicate with the Port I/O device driver'

Error:0x00000000

Please ensure the Port I/O device driver is installed'

```

Toolbox

E-Objects

- List
- Slide
- FeedbackDisplay
- InLine
- TextDisplay
- ImageDisplay
- MovieDisplay
- SoundOut
- SoundIn
- Wait

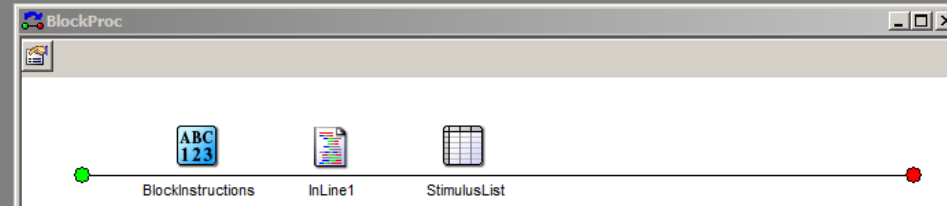
Structure

Experiment (Interference_testPort.es2) PROFESS

- SessionProc
 - Instructions
 - BlockList
 - BlockProc
 - BlockInstructions
 - InLine1
 - StimulusList
 - [TaskType]
 - PresentationProc
 - DisplayWord
 - Goodbye
- Unreferenced E-Objects
 - NC
 - NCWd
 - RCNb
 - RCNd

Properties

(no description available)



Script

```

777 Dim ParallelPortParallelPortDeviceInfo As ParallelPortDeviceInfo
778 ParallelPortParallelPortDeviceInfo.CollectionMode = ebPressesOnly
779 ParallelPortParallelPortDeviceInfo.LPT = 3
780 ParallelPortParallelPortDeviceInfo.Invert = CLogical("No")
781 ParallelPortParallelPortDeviceInfo.Mask = -1
782 ParallelPortParallelPortDeviceInfo.DataPort = 0
783 ParallelPortParallelPortDeviceInfo.Debounce = 0
784 'Load values from context if they exist
785 If c.AttribExists(ParallelPort.Name & ".CollectionMode") Then ParallelPortParallelPortDeviceInfo.CollectionMode = c.GetAttrib(Parallel
786 If c.AttribExists(ParallelPort.Name & ".LPT") Then ParallelPortParallelPortDeviceInfo.LPT = CLng(c.GetAttrib(ParallelPort.Name & ".LPT
787 If c.AttribExists(ParallelPort.Name & ".Invert") Then ParallelPortParallelPortDeviceInfo.Invert = c.GetAttrib(ParallelPort.Name & ".In
788 If c.AttribExists(ParallelPort.Name & ".Mask") Then ParallelPortParallelPortDeviceInfo.Mask = c.GetAttrib(ParallelPort.Name & ".Mask")
789 If c.AttribExists(ParallelPort.Name & ".DataPort") Then ParallelPortParallelPortDeviceInfo.DataPort = CLng(c.GetAttrib(ParallelPort.Na
790 If c.AttribExists(ParallelPort.Name & ".Debounce") Then ParallelPortParallelPortDeviceInfo.Debounce = CLng(c.GetAttrib(ParallelPort.Na
791 If c.AttribExists(ParallelPort.Name & ".EmulateDeviceName") Then ParallelPortParallelPortDeviceInfo.EmulateDeviceName = c.GetAttrib(Pa
792
793 'Open the device, unless the context values indicate otherwise
794 Dim ParallelPortOpen As Boolean
795 ParallelPortOpen = True
796 If c.AttribExists(ParallelPort.Name & ".Open") Then ParallelPortOpen = CLogical(c.GetAttrib(ParallelPort.Name & ".Open"))
797 If ParallelPortOpen = True Then
798     ParallelPort.Open ParallelPortParallelPortDeviceInfo
799

```

Ready

User Full

Output

```

Error: 0x00002747
Message: 'Unable to communicate with the Port I/O device driver

Error:0x00000000

Please ensure the Port I/O device driver is installed'

Search the web for more info on this error...

```

Generate Debug Advisor(0)