

guwaguway



A traditional story tells that the galah's colour is from when the frilled lizard threw a boomerang which hit the galah's head, causing blood to flow down her body.

pink

(reddish, from *guway*—blood)

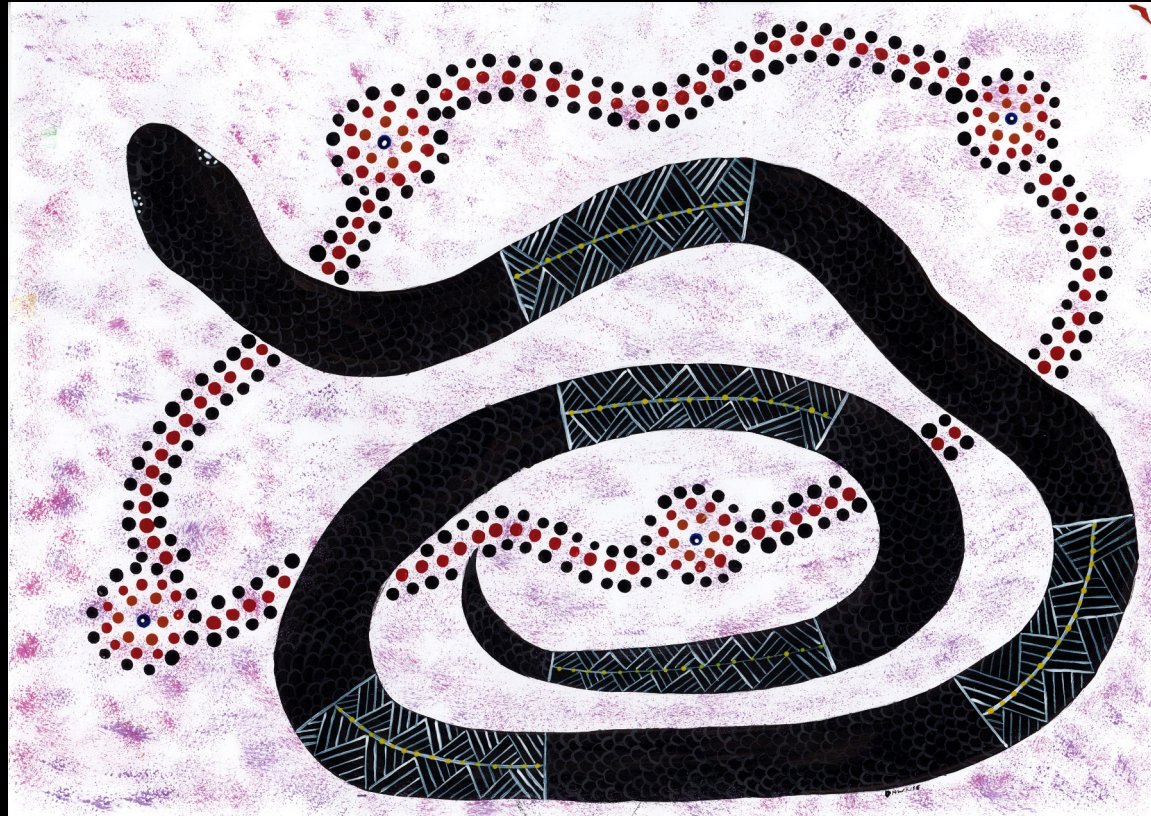
gunagunaa



brown

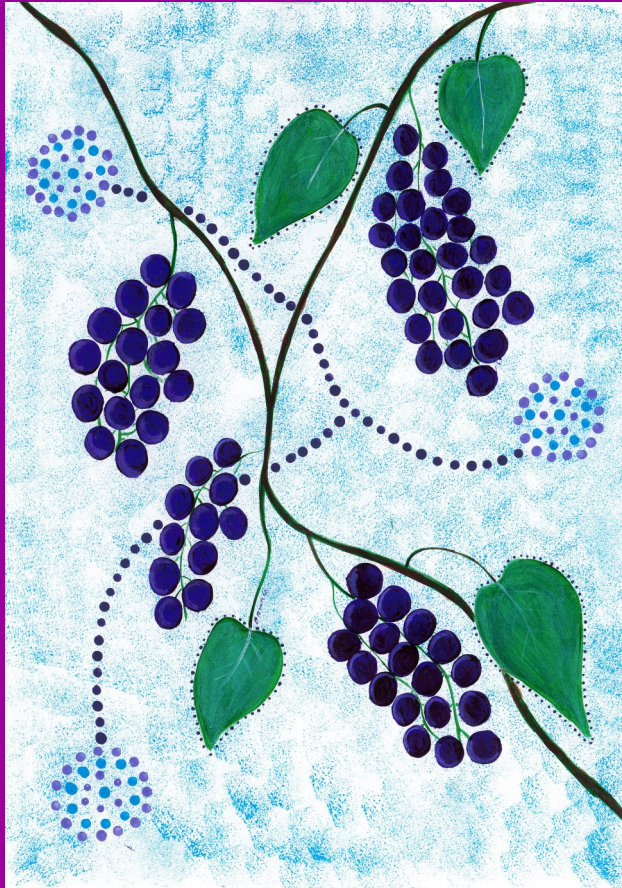
(from *guna* – *excrement*)

buluuy



black
(also night, dark)

bibubibu



purple

(from **bibu** – *dillon bush/wild grape*, because of its purple berries)

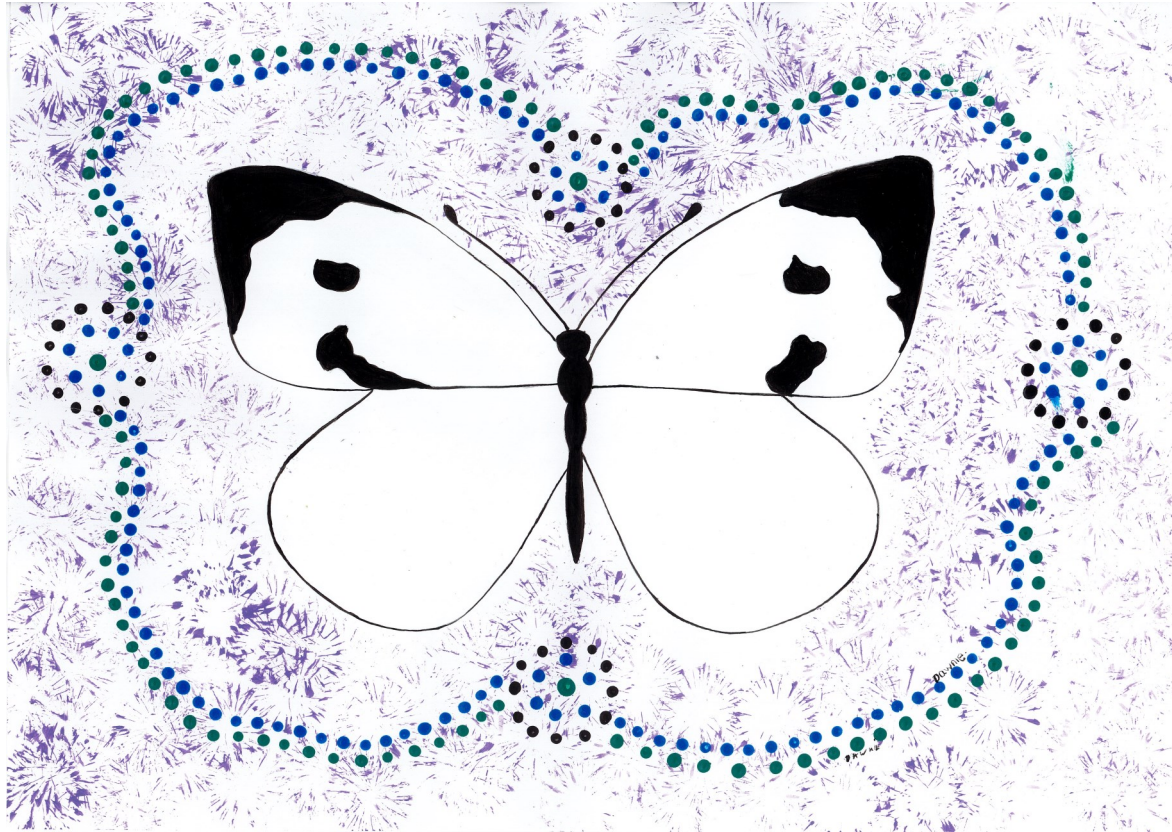
guwaymbarra



red

(from *guway* – *blood*)

banggabaa



white

(a butterfly is **balabala**, from **balaa**—another word for *white*)

yiluwidi



blue

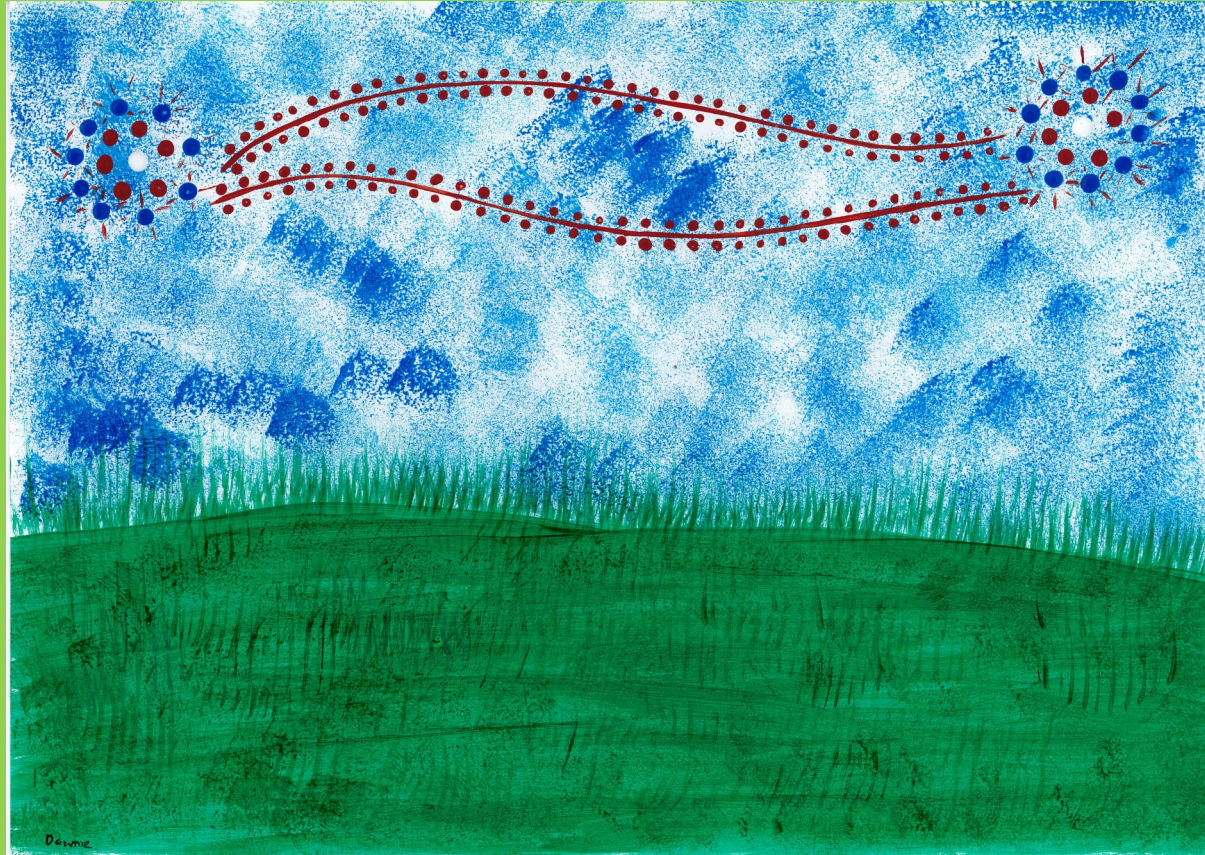
gidjirrgidjirr



yellow

(from *gidjiirr* – *gidgee/wattle*, because of its yellow flowers)

gawarrawarr



green

(possibly related to garaarr–grass)

bambubambul



orange

(from bambul – native orange tree)